

basic sugaring technique

- Read the Safety and Warming Instructions overleaf before you begin. Also read Getting the Best Results section overleaf.
- For best results, always work in small sections, no more than $\frac{3}{4}$ the length and $\frac{3}{4}$ the width of the hair removal strip.
- Before sugaring, determine the direction of hair growth.

spatula application

Angle the spatula at about 45 degrees and using the edge of the spatula apply a thin and even film of the gel in the direction of the hair growth.

The gel should be applied using a firm, even pressure. **DO NOT** paint it on using forward and backward motions.

The Pharo FIRM gel, with its extra gripping strength provides best results for the underarms, eyebrows, brazilian and bikini line.

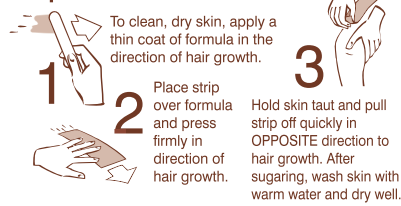
roll-on application (warmgel only)

Ensure the gel is warmed to the correct temperature (see instructions with heater). Start out by rolling some gel on a hair removal strip to ensure the gel flows evenly. Now roll the gel down in the direction of hair growth. Place the roller back into the cradle to maintain the heat.

TIP: If applied correctly, you should be able to see the skin and hair through a fine layer of the gel.

- Place a Pharo hair removal strip over the gel and press it down firmly in the direction of hair growth. The strip may be pressed down a number of times but always in the direction of hair growth. **DO NOT** rub it forwards and backwards.
- Hold the skin taut with one hand and with the other grip the bottom, gel free end of the strip.
- Using a single, decisive movement pull the strip back, along the skin and against the direction of the hair growth.
- If the gel cools and is not easily spreadable, reheat it according to the instructions overleaf, remembering to test the temperature before using it.

spatula method



Holding the skin taut and removing the strip with a single decisive action are the most important parts of the hair removal technique.

instructions for use

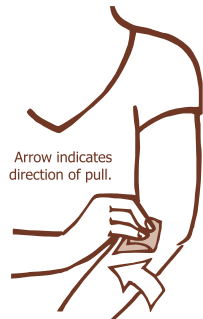
legs **warmGEL**

For the lower leg work in sections beginning from below the knee and working down towards the ankle. For the upper legs note the direction of hair growth. The hair on the inner thigh generally grows laterally as opposed to downwards as on the front of the thighs. Remember that if you do spill any gel, it can be easily washed away with warm water.

arms **warmGEL**

Check carefully the direction of hair growth. The hair on the forearms generally grows laterally. Work in small sections.

Hold the skin taut by either tightening the muscles on the arm or getting someone else to help.



underarms **firmGEL**

The underarms may need to be done in two stages because the hair generally grows in two directions, upwards in the top half and downward in the lower half. Note the correct position for Sugaring the underarms. It is important that the skin is kept as taut as possible.



upper lip & chin **warmGEL**

Clean the facial area to remove any residues of makeup or moisturisers and dry thoroughly. The strips will need to be cut down horizontally along the length to about $\frac{3}{4}$ inch. The hair on the upper lip generally grows in three directions, outwards on the sides and downward in the middle section. Work on very small sections at a time. For best results ensure that the gel is applied thinly. The skin may be kept taut by sucking the lips inwards and stretching the skin with one hand.



Note: Facial hair on men cannot be removed by sugaring as the hair root system is different.

bikini line & brazilian **firmGEL**

For ease of use, cut strip to half width. To begin, dry the area thoroughly. For best results the hair is snipped with scissors to cut it down to about 5mm, if necessary talcum powder may be liberally dusted to absorb moisture. Next the Pharo **firm** gel is applied in small sections at a time using the spatula. The hair is removed and the procedure continues.

stomach **warmGEL**

The hair on the stomach generally grows towards the centre as shown in the diagram.



eyebrows **firmGEL**

Clean the facial area to remove any residues of makeup or moisturiser and dry thoroughly. The strips will need to be cut down horizontally along the width to about $\frac{3}{4}$ inch. The hair between the brows generally grows upwards. Use the eyebrow applicator to apply the gel. For best results use the Pharo **firm** gel and ensure the gel is not too runny.



chest & back **warmGEL**

NOTE: USE THE **FIRM** GEL IF EXTRA GRIPPING STRENGTH IS REQUIRED

For men the hair on these areas grows in a number of directions. Always work in small patches based on the direction of hair growth. The hair is also generally thicker so exfoliating these areas regularly is crucial to preventing ingrown hair from developing.



Since the hair is thicker and more dense the redness may take up to a day to subside.

Pharo™
salon sugaring formula

with manuka honey

natural
water soluble
quick & easy cleanup
gentle on the skin

Naturally made in New Zealand
for Brand Value Ltd
PO Box 84 166 Westgate
Auckland New Zealand
www.pharobeauty.com



professional results **naturally**
new **sugaring gel** formula
for removing unwanted hair
by the roots in minutes
with minimal discomfort

the history of sugaring

The earliest reference to hair removal comes from ancient Egyptian hieroglyphics vividly describing how slave girls serving Pharaoh were expected to remove all body hair. Sugaring, one of the oldest forms of hair removal was the Egyptian method of choice where a solution of sugar, lemon and water was blended to make a simple sugaring paste. Today, this trusted hair removal method has been modernized to give the sugaring gel an appearance and workability resembling wax but with all the benefits of a natural product.

- **Natural & Eco friendly**

Pharo Sugaring Gel is free from solvents and harsh additives.

Recyclable cartridges help keep our planet green.

- **Economical**

Eliminates the necessity for expensive post-waxing solvents, less product and strips are used in the sugaring process.

Simply rinse the reusable roller heads with water, sterilize and re-use.

- **More comfortable**

Adheres to hair NOT skin resulting in significantly less discomfort.

- **Water soluble**

Natural water soluble formulation makes cleaning easy. Simply rinses off with warm water.

Pharo Salon Sugaring Gels are an advanced natural formula developed for easy, effective, long term removal of body hair. The added skin enhancers Kiwifruit and Aloe Vera will leave the skin naturally soft, smooth and nourished. The gel contains New Zealand Manuka Honey rich in protein, minerals and vitamins with antibacterial properties to protect and heal sensitive skin. The captivating sweet fragrance of Manuka Honey adds a new dimension to the hair removal experience. The Pharo gel is specially formulated to stay luxuriously spreadable right down to the bottom of the jar. Use the gel with the innovative strips for effective results with minimal discomfort.

hydro-entangled hair removal strips

Pharo Hydro-Entangled non woven strips are made from a polyester / cellulose blend for optimum results. The heavy cellulose content will provide excellent absorbency for high perspiration areas, while the non woven substrate provides extra strength and durability. The Pharo Hydro-Entangled strips have a softer feel and are designed with a unique texture enhancing the effectiveness of the strip. It is available in a convenient large size for maximum hold. The Pharo Hydro-Entangled Strips have been specially put through the sterilization process offering the professional beautician added hygiene.

safety instructions

- **Do not over heat the gel.** It will not only cause the product to harden but can also cause severe burns.
- If you accidentally overheat the gel for over a minute, leave it to cool for at least 30 minutes before attempting to remove the pot from the microwave or pot heater.
- If by accident you spill overheated gel on your skin, immerse the affected area immediately in cold running water for at least 10 minutes.

- Ensure the gel is stirred thoroughly before use.
- Test a small amount of the gel on the inside of the wrist to ensure that the temperature is comfortably warm.
- After using the gel, any spillage on the outside of the jar should be wiped with a damp cloth. Ensure that no water gets inside. Replace the cap tightly.

skin reaction

Do not use the gel if you are using a glycolic acid or other acid peel treatment.

If using the product on a client, patch test on a small area of skin and wait for any abnormal reaction.

- It is normal that a slight redness will appear after hair removal; however this should subside within a few hours.
- To reduce the redness quickly, a cold flannel or compress will help. If irritation of the skin persists, discontinue use.
- Do not use the gel to remove hair from moles, or on areas of skin which are broken, sunburned or which have large varicose veins.
- Do not sunbathe or use a sun bed for at least 12 hours before or after use.
- **CAUTION: Delicate skin or poor circulation may bruise with sugaring**

note: Encourage clients to exfoliate the skin regularly, using a loofah or other such aid.

using the Phâro roll-on cartridges

If using the Pharo Roll-On cartridges follow the instructions provided with the Roll-On Cartridge Heater.

warming in a Phâro pot heater

The heating times set out below are indicative times and will vary depending on the room temperature, quantity of product and wattage of heat applied.

- Remove the cap and inner seal completely before heating.
- Stand the pot in the heater. If the gel is going to be poured in the pot heater, ensure that after use the heater is shut tightly with the locking lid.

warming in a microwave

- Always remove the cap and inner seal completely before heating.
- Do not overheat the gel as it may lose its effectiveness and can cause severe burns. Always use the chart below for typical heating times.

typical warming times

1200w microwave / Pharo pot heater

firmGEL	full pot	half pot	quarter pot
700g salon pot	50 sec	30 sec	15 sec
150g sample pot	15 sec	10 sec	5 sec
Phâro thermostatically controlled pot heater	Follow pot heater instructions for proper useage. The formula performs optimally at around 47°C. Once correct fluidity is reached, set the control to keep the formula between 45°C and 50°C.		

warmGEL	full pot	half pot	quarter pot
700g salon pot	50 sec	30 sec	15 sec
150g sample pot	15 sec	10 sec	5 sec
Phâro thermostatically controlled pot heater	Follow pot heater instructions for proper useage. The formula performs optimally at around 42°C. Once correct fluidity is reached, set the control to keep the formula between 40°C and 45°C.		

Stir gel thoroughly for even temperature **DO NOT OVERHEAT.** After use, wipe pot, replace cascar seal and close lid tightly.

checking

gel temperature

- After warming the gel remove it from the microwave or pot heater. Stir it well with a spatula to get an even temperature and consistency.

- The gel should have a consistency similar to pourable liquid honey and should adhere to the spatula. If it is too hot then the gel will be runny and must be allowed to stand and cool before use. If it is too thick heat for a little while longer.
- If the gel cools during the hair removal process, reheat accordingly.
- If the gel appears to have lost its smooth consistency this can be restored by heating and stirring it well with a spatula.

getting the best results

The body area to be Sugared should be at normal temperature and free from perspiration.

To ensure that the client does not perspire during the hair removal process, use the gel in a well ventilated room or in hot weather in front of a fan or an air conditioner. The bikini line and underarms are two areas of the body where the body temperature is always higher. In hot weather especially, cool the area down with a cold damp towel for a few minutes and then dry thoroughly.

The skin should be completely clean and free from moisturisers, lotions and excess body oils because this will affect the grip of the gel on the hair. To ensure that you achieve this, wipe the area to be Sugared with a cold damp cloth. The skin has to be dry because any water on the skin will affect the product. The gel is water soluble and will absorb the water and become less effective.

After hair removal, simply wash the skin with warm water. Finish off by drying the skin thoroughly. It is not advisable to use cooling gels because these may block the skin's pores.

tip: A light dusting of talcum powder may be used to ensure that the skin is completely dry after being wiped down, and on a hot day can be used to absorb any perspiration during the Sugaring process.